

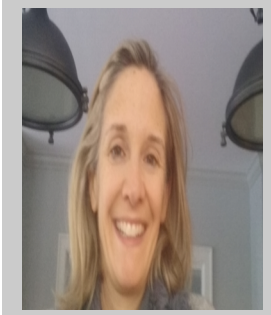
## Rye Presbyterian Church - Associate Pastor Nominating Committee 2017



**Douglas DeStaebler – Co-Chair:** Doug and his wife, Sue are active members at RPC and have lived in Rye for over 20 years. Doug is an Elder on Session and currently serves as Board President of the Rye YMCA. Sue has functioned in numerous capacities throughout the community, including her current role as a Stephen Minister. Their two children have been active in the RPC youth group, participated in several mission trips to New Orleans, and both served as Youth Deacons. Doug is the Founder and Managing Member of Courtfield Capital LLC, a private investment firm headquartered in Rye.



**Sarah Snell – Co-Chair:** Sarah joined RPC in 2007 by letter of transfer from Fifth Avenue Presbyterian Church. She and her husband Scott live in Rye with their twin daughters and son. Sarah is currently serving her second term on the Board of Deacons and is co-chairing the Christian Education committee. Previously she served on the Dinner at Noon committee and was a Sunday school teacher for five years. Sarah has a B.S. in Chemical Engineering from The University of Texas at Austin. Prior to being a stay at home mom, Sarah worked in the energy industry. She grew up in Texas and enjoys summers in Maine with her family.



**Beth Duchanaud -Recording & Correspondence Secretary:** Beth joined RPC just a couple of years ago. She and her husband, Stephane have three daughters, all attending Sunday school. Beth has served as a Sunday school teacher for many years and she and her family are active in RPC's Coming Home Program. She graduated from NYU with a PhD in French Literature and is currently pursuing her Masters in Social Work, also at NYU.



**Elizabeth Parks – Correspondence Secretary:** Elizabeth and her husband Andy joined RPC in 2014. They have three young daughters who are actively involved in the church with Sunday school and their two oldest sing in the children's choir. Elizabeth enjoys teaching the 2<sup>nd</sup> graders in Sunday school and Andy serves as a Trustee. Elizabeth is currently the Executive Director of Sponsorship Sales for Fortune's Conference Division. She also sits on the board of the Financial Communications Society, a non-profit organization that is dedicated to improving professional standards in financial marketing communications through a mission of community, education and philanthropy. She has a B.A. in Marketing from The University of Texas at Austin.



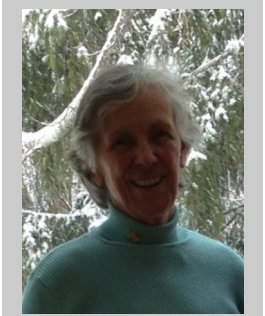
**John Hunt-Congregation Liaison:** John and his wife, Cheryl have been active members of RPC since 1997. They have two sons, who both attended Rye Presbyterian Nursery School and have served as Youth Deacons. One of their sons has participated in the Youth Mission trip three times. Cheryl has served as a Deacon and currently serves on the Session. John is an Elder having previously served on the Session and has just completed two terms as a trustee where he served as President, Vice President and head of the Investment Committee. John has spent his entire career in the financial services industry and most recently he was the CEO of the Institutional Asset Management Business at J.P. Morgan.



**Katy Ridley:** Katy grew up as a member of RPC. As a child she sang in the children's choir (led by her mother) and enjoyed attending the church's after school program, "M&Ms" (Music & Mission). In high school she was active in impact, a program for teens in all of the Rye churches to come together. Katy and her husband, John, were married at RPC in 2006 and now she is grateful to be able to raise her family here in Rye. Their two daughters (Elle-6 and Emma-4) were baptized at RPC and have attended the nursery school as well. Katy is a second grade teacher at Milton School in Rye.



**Tom Kanes:** Tom is very excited about the Associate Pastor for Christian Education search. Tom has served on the board of Trustees both at RPC and at Fifth Avenue Presbyterian in Manhattan. Tom works in banking in New York City. He has two teenage daughters and feels very strongly about the importance of this call and its many opportunities.



**Nancy Platt:** Nancy has been a member of RPC since the 1970s and has been a tenor in the choir since the late 1980s. Nancy recently served as an Elder on Session, serving on the personnel committee. She is also a Stephen Minister and on the steering committee of Lives in Transition. Nancy's four children were all confirmed at RPC. Her career was with Time Warner and HBO in Human Resources where she retired after 20 years of service in 2000. Besides a few years in Cos Cob, CT in the early 2000's, Nancy has lived in Rye since 1965.



**Glory Valentine Kanes:** Glory is a senior at Rye High School and was an Elder on the Session representing youth for the past year. She has assisted with Sunday school with the pre-school group for the past three years. She has also been active in Connection and Youth Group, including attending the trip to New Orleans for the last three summers. She is glad to offer the youth perspective on the Associate Pastor Nominating Committee.